

---

## **USFS Trail Class Photo Examples**

The following photos provide visual examples of typical Trail Class scenarios. Remember that Trail Classes are general categories reflecting development scale, arranged along a continuum, with no hard and fast lines drawn between the classes. Use the photos as visual aids to assist in consistent application of trail classification.

### **Trail Class 1**



**Trail Class 1: Tread**—The tread is intermittent and indistinct.



**Trail Class 1: Obstacles**—Obstacles are common, naturally occurring, and often substantial.





**Trail Class 1: Constructed Features**—Constructed features are minimal to nonexistent.



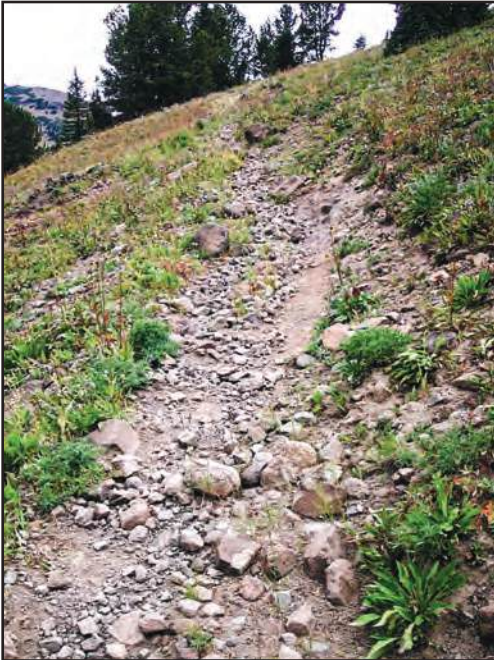
**Trail Class 1: Signs**—Route identification signing is limited to junctions. Route markers are present when the trail location is not evident.





**Trail Class 1: Typical Recreation Environment/Experience**—The typical recreation environment/experience is natural and unmodified.

Trail Class 2



**Trail Class 2: Tread**—The tread is continuous and discernible, but narrow and rough.



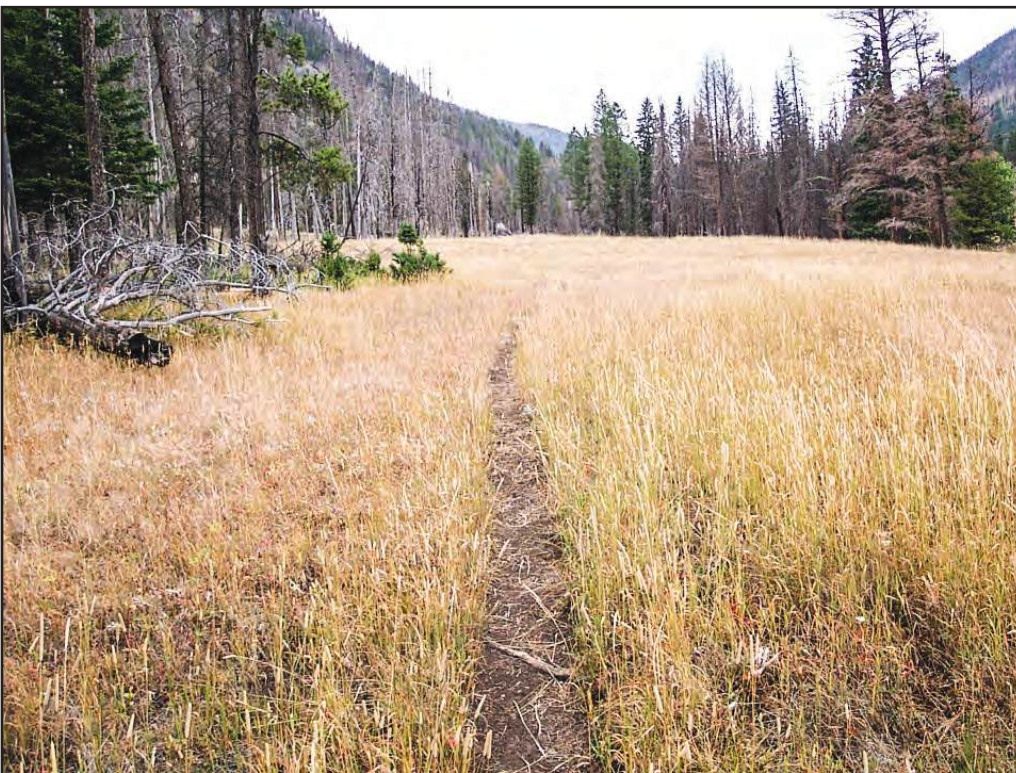
**Trail Class 2: Obstacles**—Obstacles may be common and substantial. Blockages are cleared to define the route and protect resources. Vegetation may encroach into the trailway.



**Trail Class 2: Constructed Features**—Constructed features are of limited size, scale, and quantity.



**Trail Class 2: Signs**—Route identification signing is limited to junctions. Route markers are present when the trail location is not evident.



**Trail Class 2: Typical Recreation Environment/Experience**—The typical recreation environment/experience is natural and essentially unmodified.

Trail Class 3



**Trail Class 3: Tread**—The tread is continuous and obvious.



**Trail Class 3: Obstacles**—Obstacles may be common. Vegetation is cleared outside of the trailway.



**Trail Class 3: Constructed Features**—Constructed features such as walls, steps drainage, and raised trail, may be common and substantial.



**Trail Class 3: Signs**—Route identification signing is present at junctions and as needed for user reassurance. Destination signing is likely outside of wilderness areas.



**Trail Class 3: Typical Recreation Environment/Experience**—The recreation environment/experience is natural and primarily unmodified.

Trail Class 4



**Trail Class 4: Tread**—The tread is wide and relatively smooth, with few irregularities.



**Trail Class 4: Obstacles**—Obstacles are infrequent and insubstantial. Vegetation is cleared outside of the trailway.

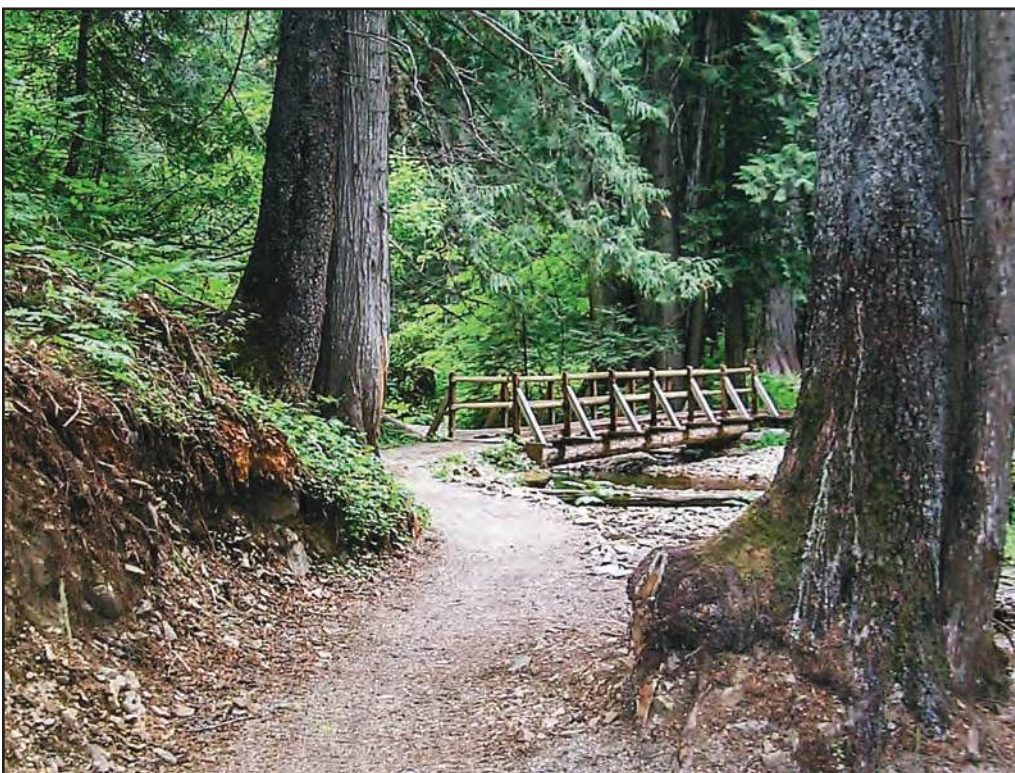




**Trail Class 4: Constructed Features**—Constructed features are frequent and substantial. Trailside amenities may be present.



**Trail Class 4: Signs**—A wide variety of signing is likely present. Informational signs are likely and interpretive signs are possible.



**Trail Class 4: Typical Recreation Environment/Experience**—The recreation environment/experience may be modified.

## Trail Class 5



**Trail Class 5: Tread**—The tread is wide, firm, stable, and generally uniform. Trails are commonly hardened with asphalt or other imported material.



**Trail Class 5: Obstacles**—Obstacles are not present. Grades are typically less than 8 percent.



**Trail Class 5: Constructed Features**—Constructed features are frequent or continuous. Structures may include bridges, boardwalks, curbs, handrails, trailside amenities, and similar features.





**Trail Class 5: Signs**—A wide variety of signing is present. Informational and interpretive signs are common.



**Trail Class 5: Typical Recreation Environment/Experience**—The recreation environment/experience may be highly modified.